

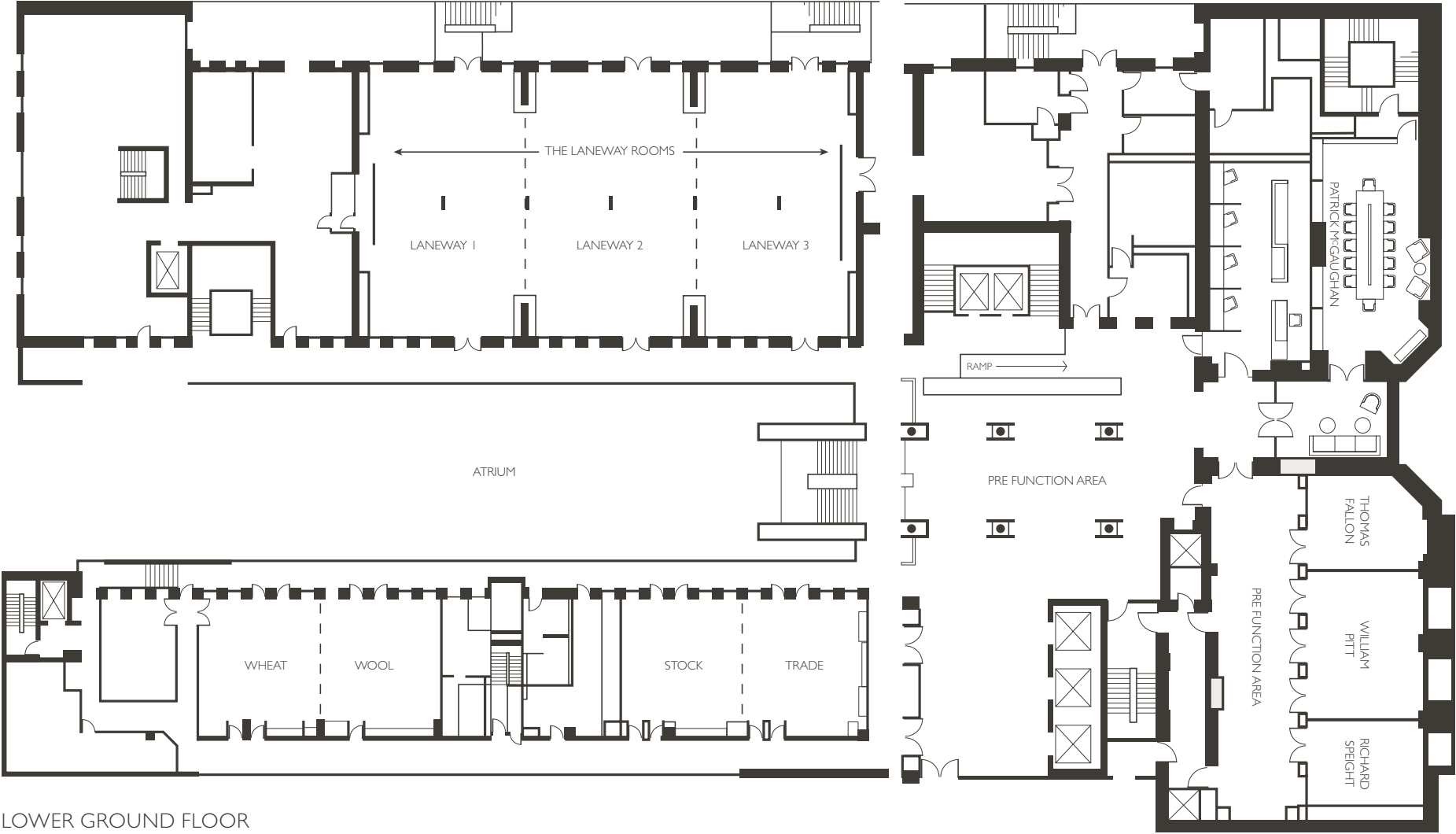
CAPACITIES

Name of Room	Boardroom	U-Shape	Cabaret	Classroom	Banquet	Cocktail	Theatre	Size (sqm)	Length x Width (m)	Height (m)
The Laneway Rooms	-	-	176	188	300	350	420	504	40.0 x 12.6	2.85
Laneway 1&2 or 2&3	-	-	120	132	170	220	258	335.1	26.6 x 12.6	2.85
Laneway 1 or 3	30	30	56	57	70	100	108	157.5	12.5 x 12.6	2.85
Laneway 2	30	30	64	84	100	120	160	177.6	14.1 x 12.6	2.85
Stock	24	24	32	36	50	80	78	69.8	9.7 x 7.2	2.86
Trade	24	24	32	36	50	80	78	68.4	9.5 x 7.2	2.86
Stock & Trade	48	54	80	81	100	160	156	138.2	19.2 x 7.2	2.86
Wheat	24	24	32	36	50	80	78	70.5	9.8 x 7.2	2.86
Wool	24	24	32	36	50	80	78	69.8	9.7 x 7.2	2.86
Wheat & Wool	48	54	80	81	100	160	156	141.8	19.7 x 7.2	2.86
Patrick McCaughan	18	-	-	-	-	-	-	36.9	4.2 x 8.8	2.36
Thomas Fallon	12	-	-	-	-	-	-	21.7	4.1 x 5.3	2.37
Richard Speight	12	-	-	-	-	-	-	21.7	4.1 x 5.3	2.37
William Pitt	12	15	16	18	20	30	30	37.1	7.0 x 5.3	2.37
Alluvial Restaurant	-	-	-	-	120	150	-	134	24.63 x 33.0	-
Bluestone Lounge	-	-	-	-	-	70	-	52	11.63 x 33	-
Secret Laneway	-	-	-	-	-	160	-	115	56.03 x 2.07	-



INTERCONTINENTAL®
MELBOURNE THE RIALTO

FLOOR PLANS



LOWER GROUND FLOOR